

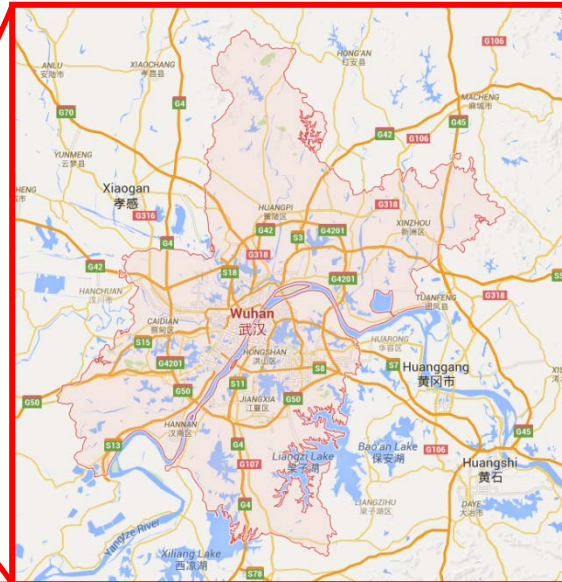
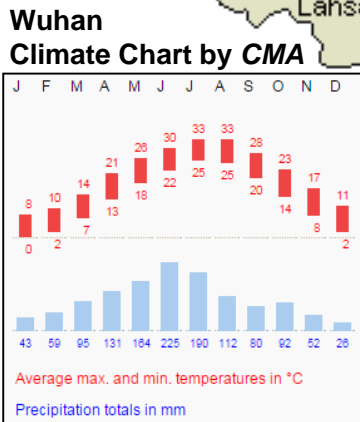
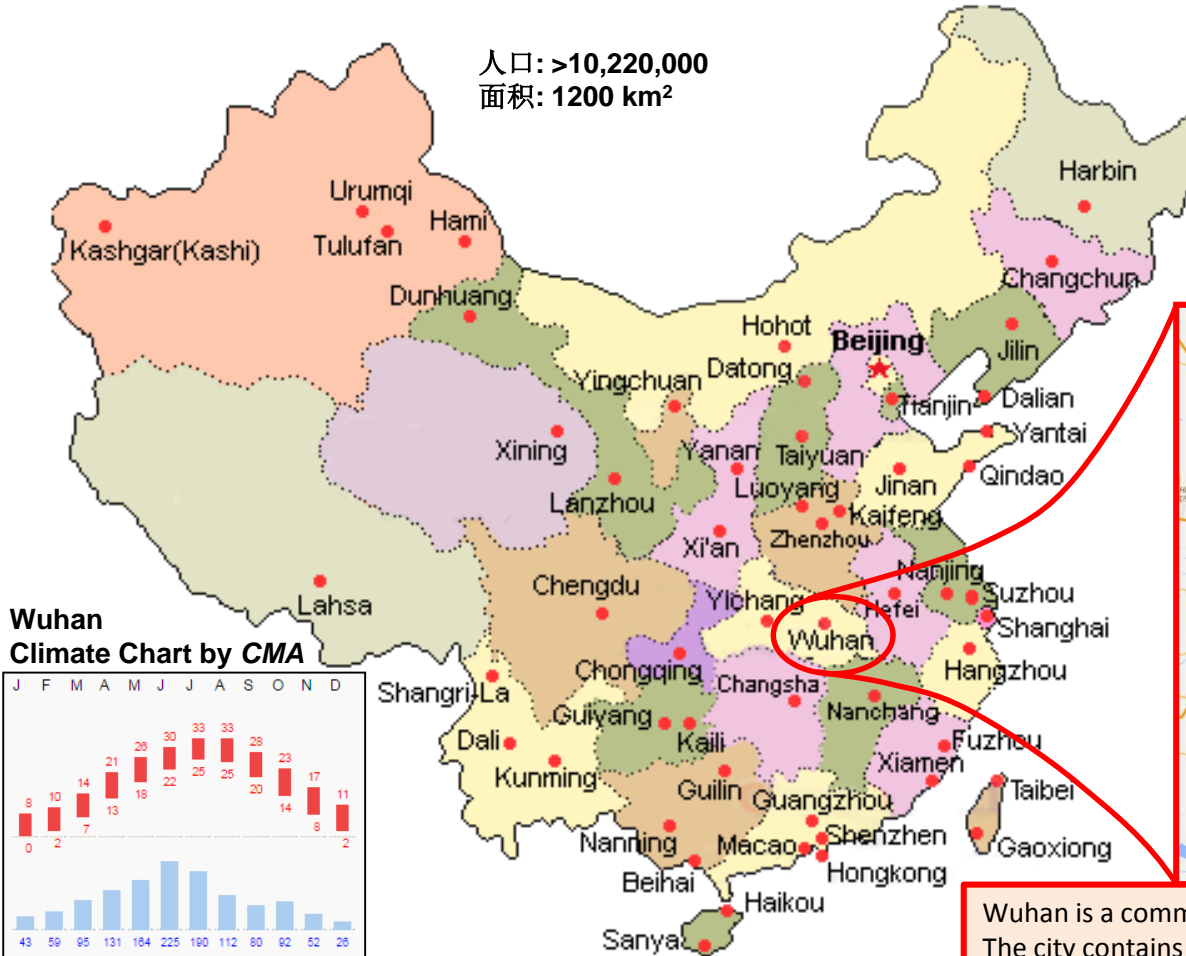
# AHT室内加热垫的安装 武汉样板间



**A&D Technologies, China**

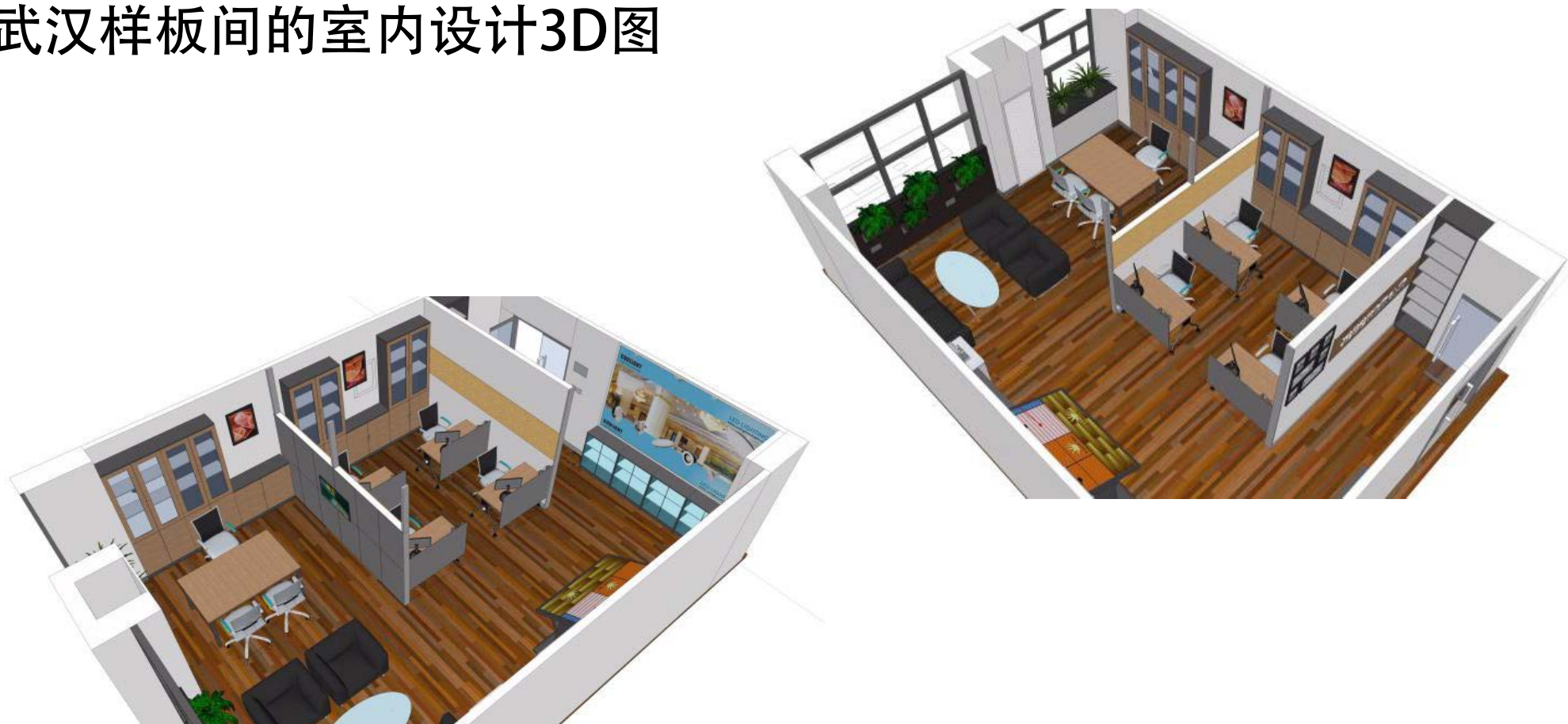


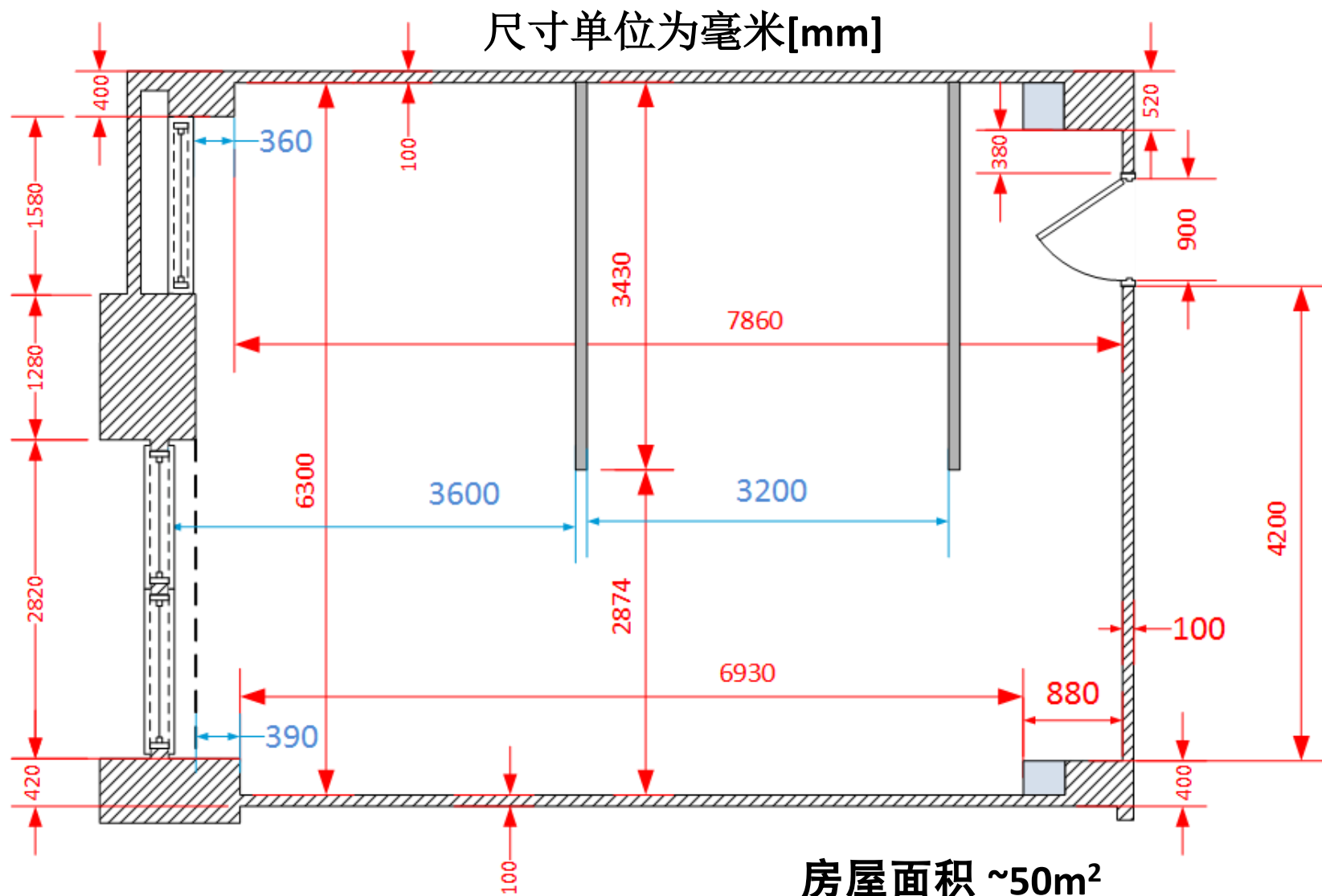
## 武汉-华中区的中心城市

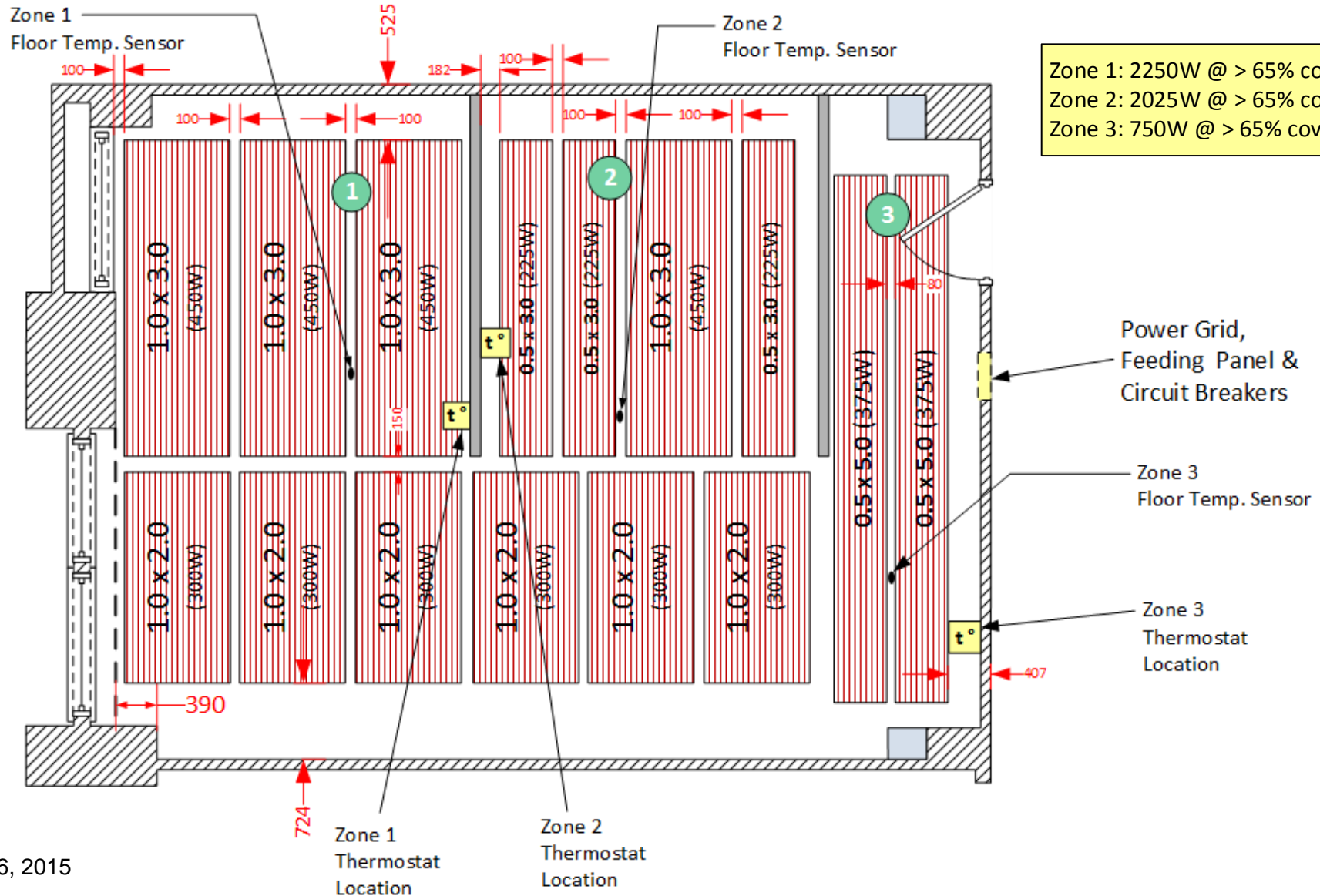


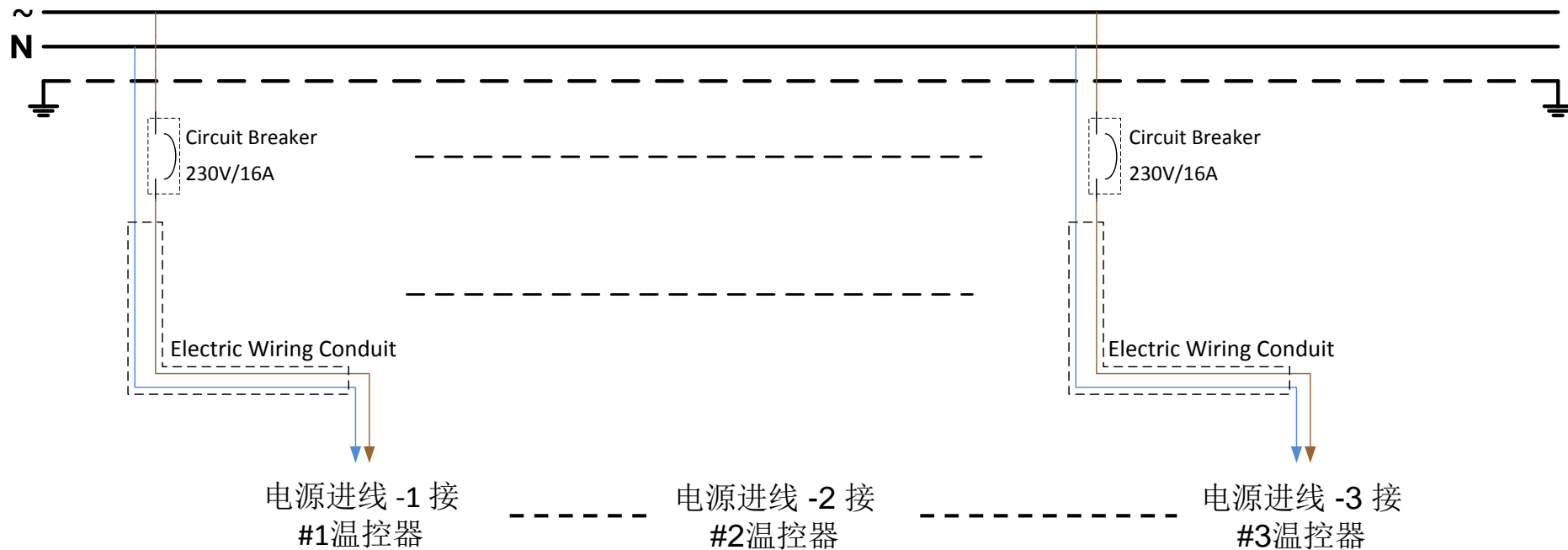
Wuhan is a commercial center divided by the Yangtze and Han rivers. The city contains many lakes and parks, including expansive, picturesque East Lake. Nearby, the Hubei Provincial Museum displays relics from the Warring States period, including the Marquis Yi of Zeng's coffin and bronze musical bells from his tomb.

武汉样板间的室内设计3D图

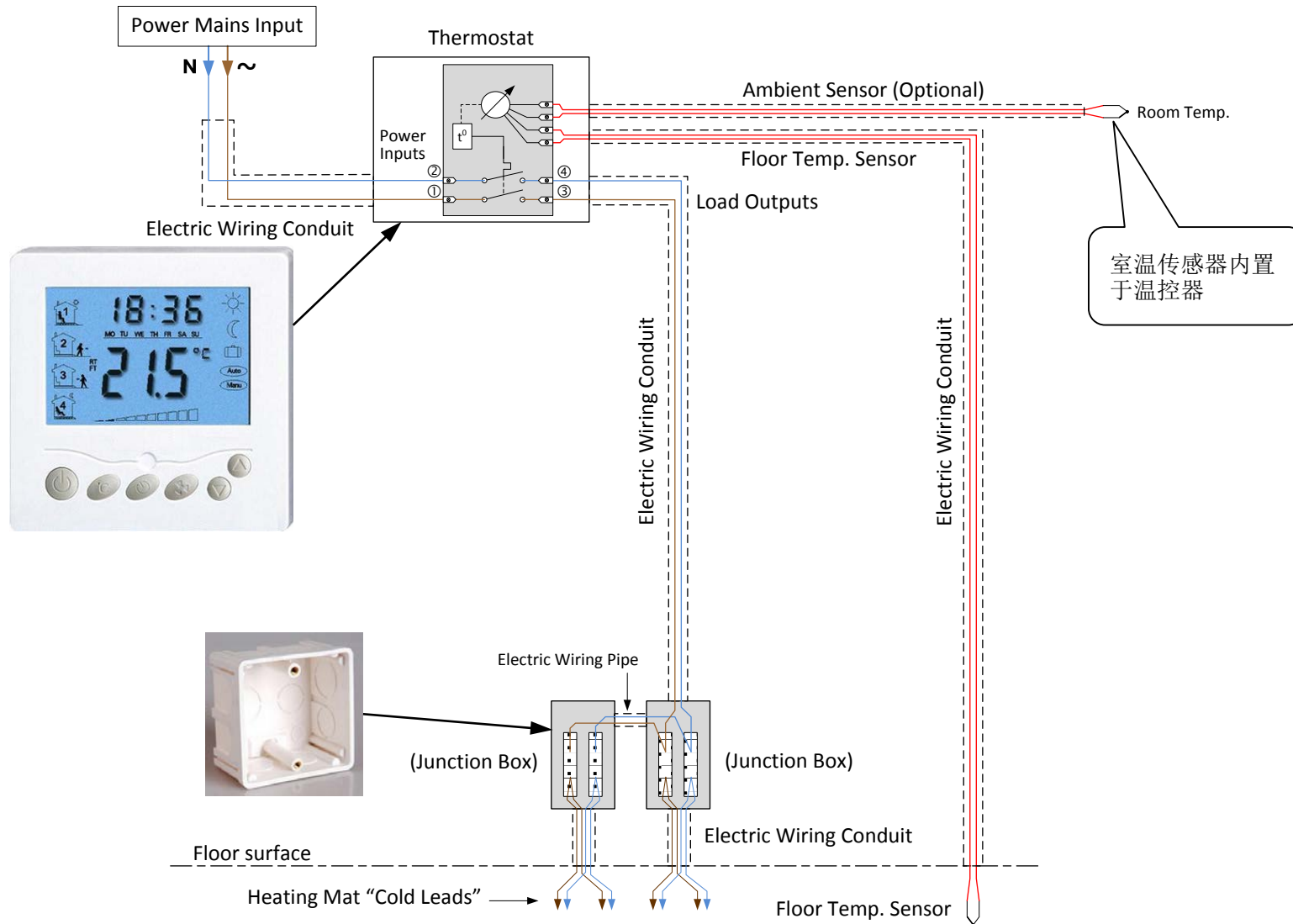


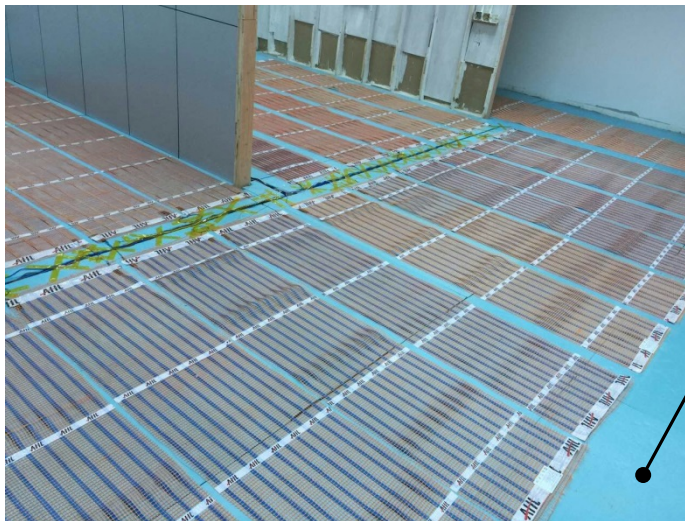




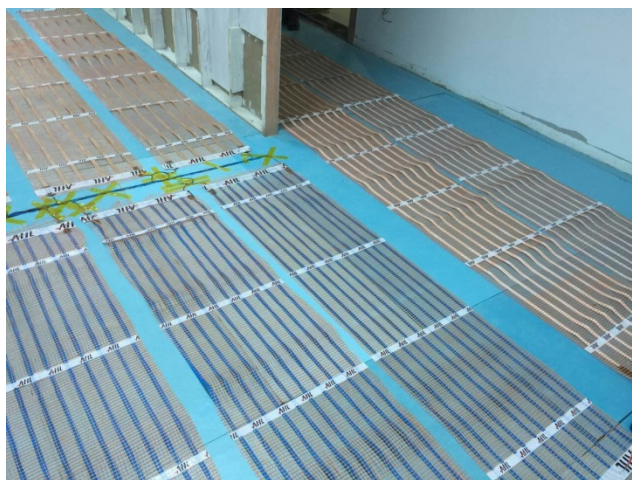
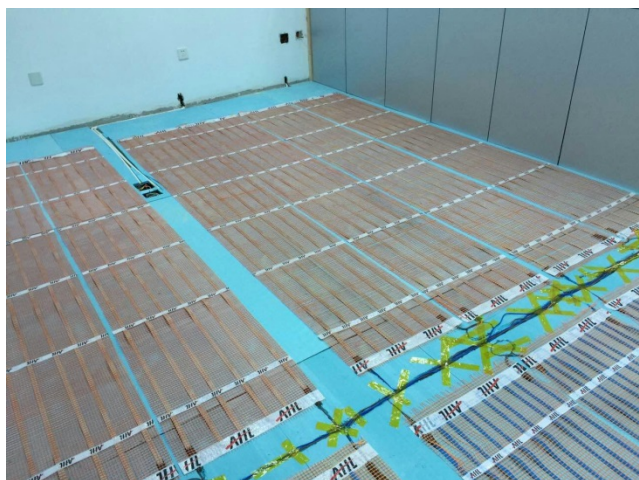


3组独立的电源供电 合计约5千瓦~

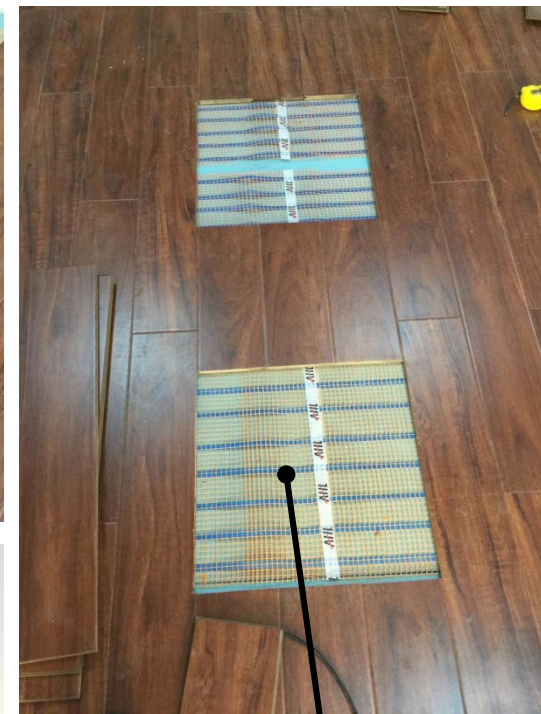
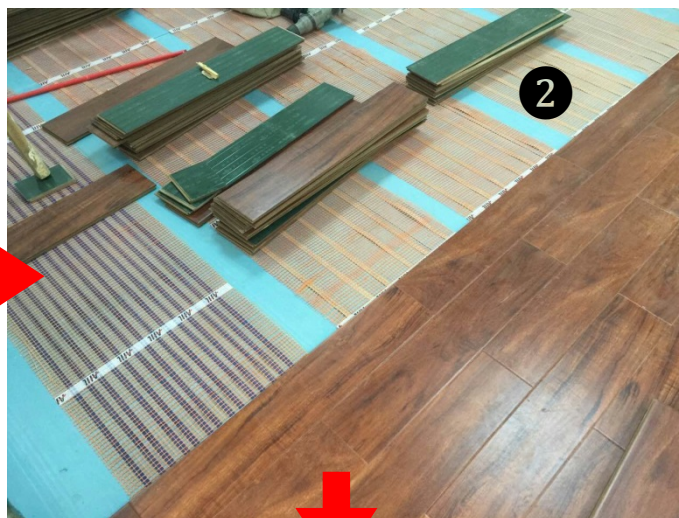




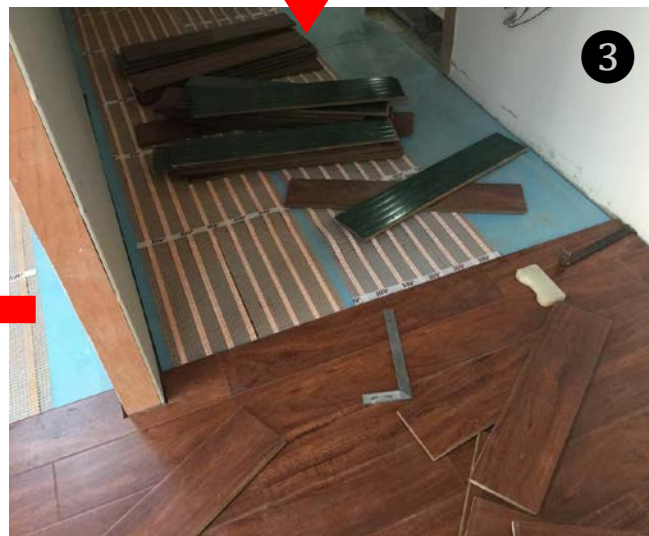
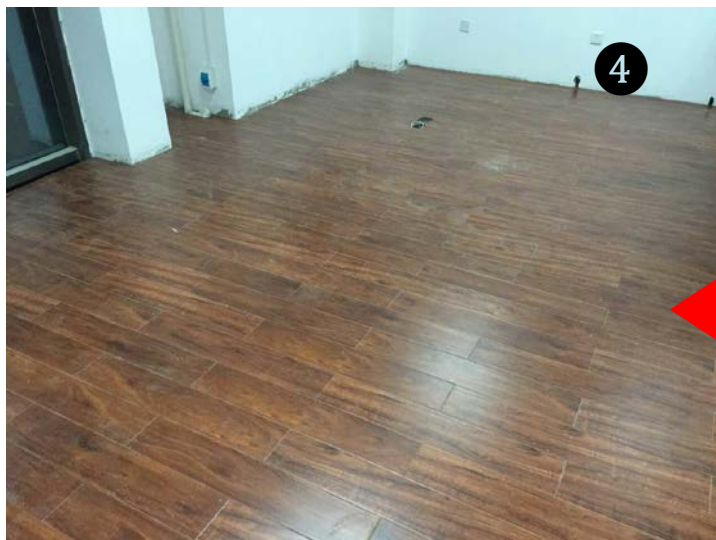
在此使用的是2CM  
厚的隔热板



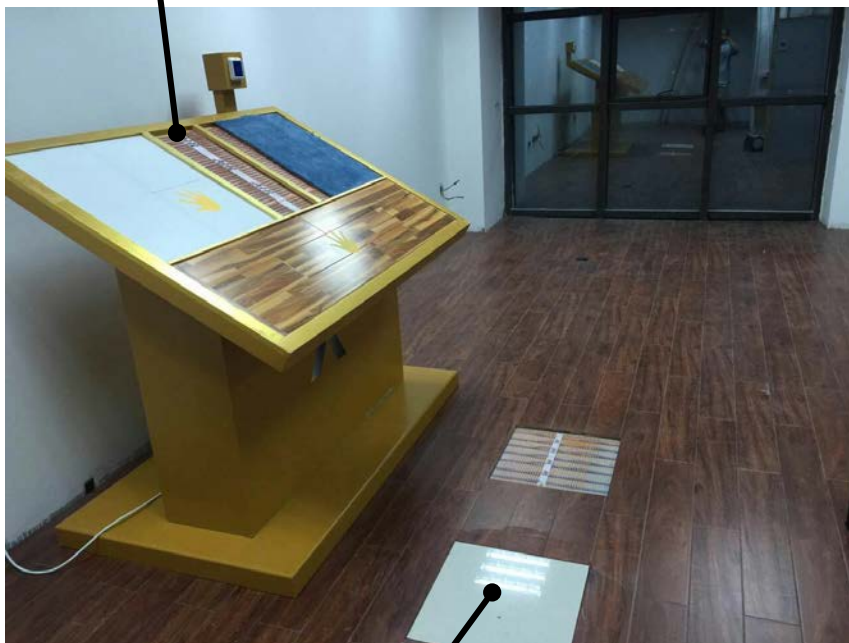




留出瓷砖和玻璃的  
位置用于加热系统的  
演示



### “Touch Me” 展示台



局部使用瓷砖以演示不同地面材料的使用效果

### 温控器的安装



接线盒