

# AHT室内加热垫的安装 济南样板间



**A&D Technologies, China**

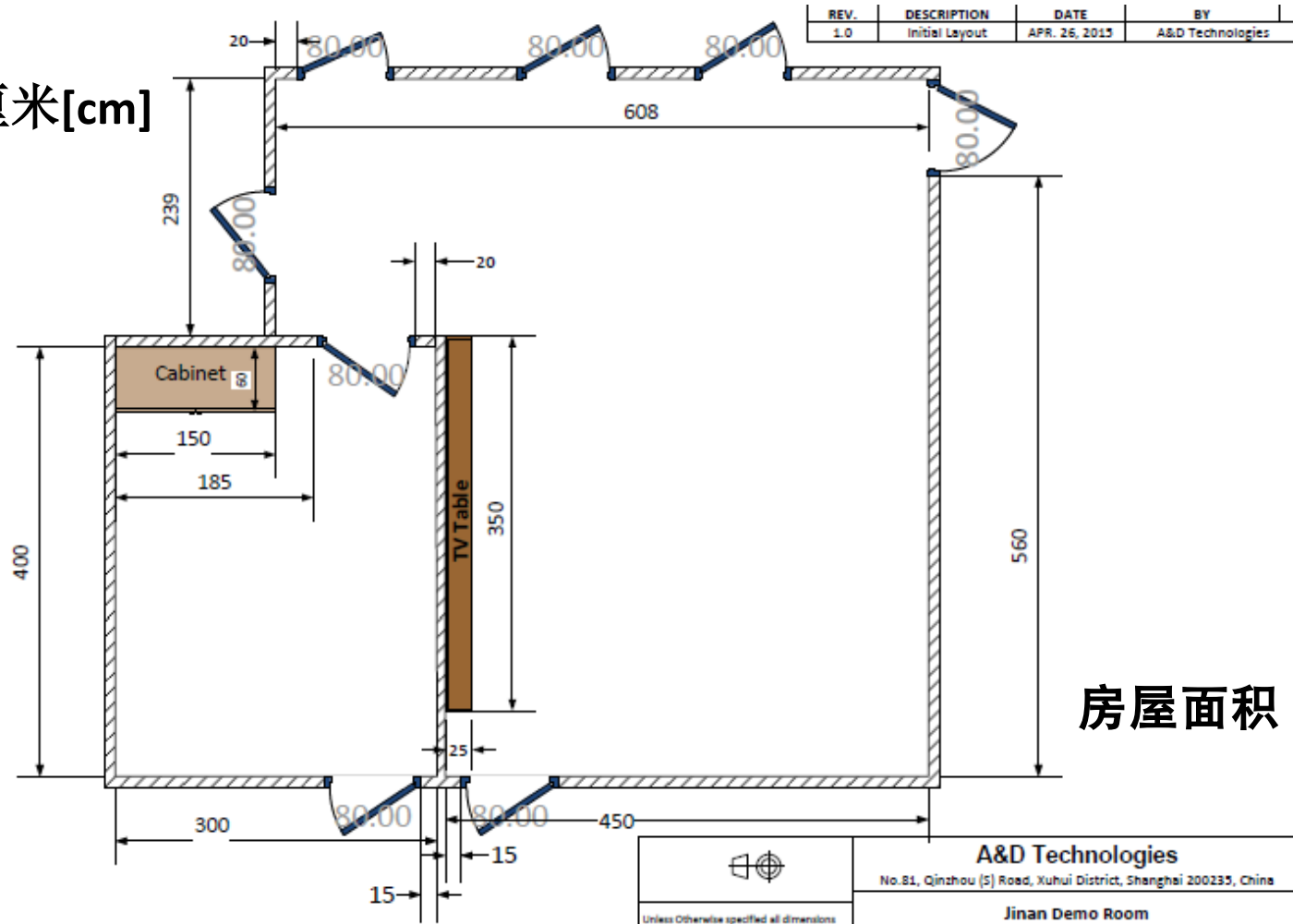


July 18, 2015

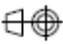


**济南：山东省会**  
**人口：700万**  
**面积：8177平方公里**

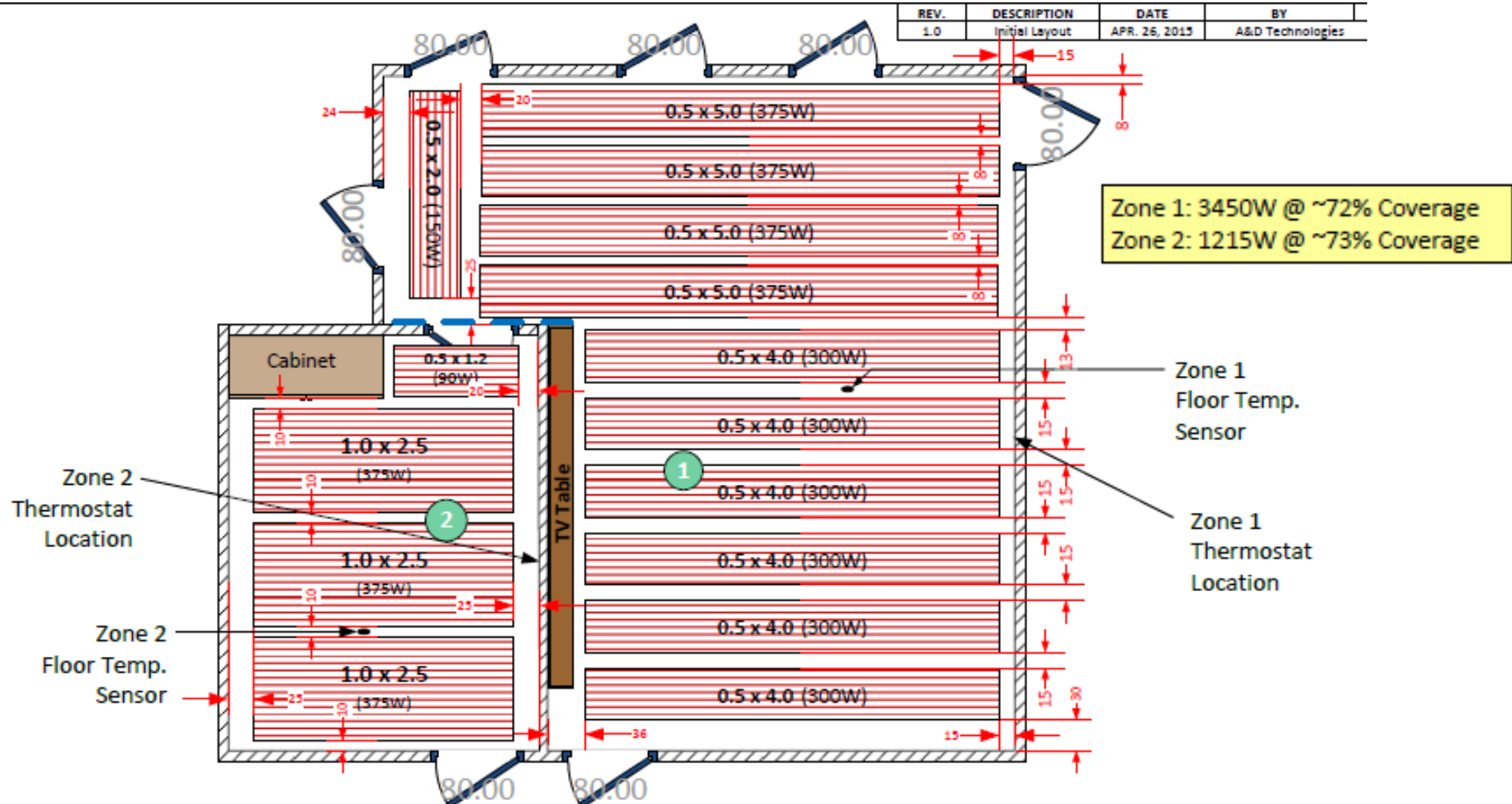
尺寸单位为厘米[cm]

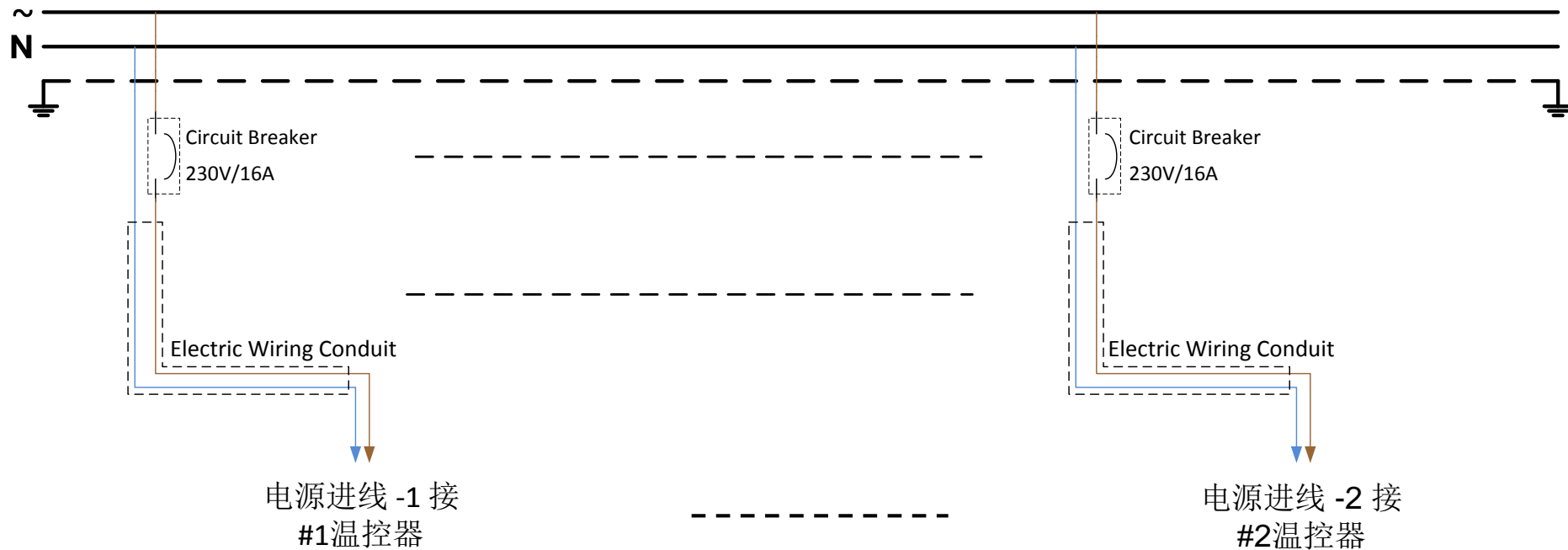


房屋面积 ~46.5m<sup>2</sup>

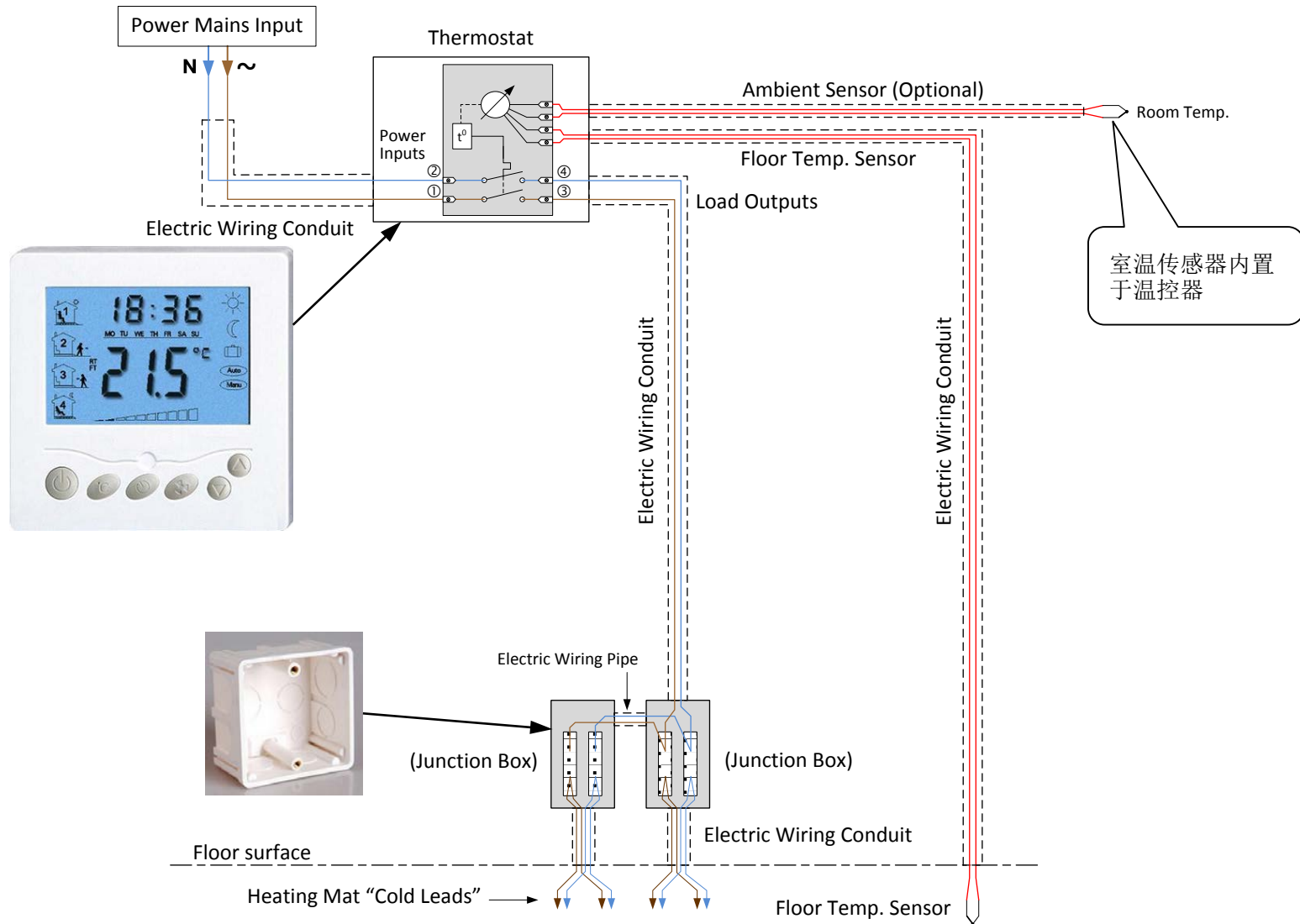
 Unless Otherwise specified all dimensions are in Centimeters Tolerances: ± 5mm		<b>A&amp;D Technologies</b> No. 81, Qinzhou (S) Road, Xuhui District, Shanghai 200235, China			
		<b>Jinan Demo Room</b> (Heating Mat Spec. 150W/m <sup>2</sup> )			
Design: GHT Japan Co., Ltd.	SIZE: A4	FSOM NO: 000426-15	DWG NO: Room Space & Dimensions	REV: 1.0	
NAME: Doron Lapidot	SCALE: 1:50	SHEET: 1 OF 3			

REV.	DESCRIPTION	DATE	BY
1.0	Initial Layout	APR. 26, 2013	A&D Technologies





2组独立的电源供电 合计约4.6千瓦~





在此使用的是2CM  
厚的隔热板







餐厅



客厅